



Manufactured for Australian conditions. Lightweight and glazed with UV stabilised tinted acrylic. Windout operation. Full range of sizes with high frequency welded removable lycscreens. Easy face-fix installation.

JUpITER 2 RADIUS CORNERS SINGIE HOPPER



Size (h x w)	Frame	
	Black	White
280mm x 457mm	037676	037679
280mm x 610mm		037681
280mm x 762mm	037682	037683
280mm x 1175mm		037689
380mm x 457mm	037690	037691
380mm x 610mm	037692	037693
380mm x 762mm	037695	037696
380mm x 914mm	037698	037700
380mm x 1175mm	037701	037703
380mm x 1524mm	037704	037705
450mm x 610mm	037706	037707
450mm x 762mm	037708	037710
450mm x 914mm	037712	037714
450mm x 1175mm	037716	037718
508mm x 914mm	037726	037727
508mm x 1175mm	037728	037729
508mm x 1524mm	037730	037731
565mm x 914mm		037740
565mm x 1175mm	037742	037745
565mm x 1524mm		037748

JUpITER 4 RADIUS CORNERS SINGIE HOPPER



Size (h x w)	Frame	
	Black	White
813mm x 762mm	037763	
903mm x 914mm	037769	037770

DOUBIE HOPPER



Size (h x w)	Frame	
	Black	White
851mm x 914mm	037753	037754
951mm x 914mm	037757	
1137mm x 914mm	037759	037760

REGUIAR 2 RADIUS CORNERS SINGIE HOPPER



White powder coated frame.

Abbreviations:

CLRG Clear Float Glass
TNTG Tinted Float Glass
OBSG Obscure Float Glass

Size (h x w)	glazing	
280mm x 457mm	CLRG	037173
280mm x 457mm	TNTG	037174
280mm x 457mm	OBSG	037177
280mm x 1175mm	CLRG	037237
380mm x 1175mm	TNTG	037309
450mm x 762mm	CLRG	037344
450mm x 1175mm	CLRG	037367
508mm x 914mm	CLRG	037410
508mm x 1175mm	CLRG	037422
508mm x 1175mm	TNTG	037423
508mm x 1524mm	CLRG	037433
565mm x 1175mm	CLRG	037508
851mm x 914mm	CLRG	037584
1137mm x 914mm	CLRG	037603

SIlmIINE 4 RADIUS CORNERS

Full fixed insect screen. Clamp rings included. ADR stamp.



Size (h x w)	Frame	
	Black	White
22mm ClAmp RING		
380mm x 457mm	011921	011922
380mm x 914mm	011923	
380mm x 1175mm	011925	011926
380mm x 1524mm		011927
450mm x 610mm	011929	011930
450mm x 762mm	011931	011932
450mm x 914mm	011933	011934
450mm x 1175mm	011935	011936
565mm x 610mm	011939	
29mm ClAmp RING		
380mm x 457mm	011985	011986
380mm x 914mm	011987	
380mm x 1524mm	011991	011992
450mm x 610mm	011993	011994
450mm x 762mm	011995	011996
450mm x 914mm	011997	011998
450mm x 1175mm		012000
565mm x 610mm	012003	012004
565mm x 762mm	012005	012006
565mm x 914mm	012007	012008
565mm x 1175mm	012009	012010
565mm x 1524mm	012011	012012
737mm x 914mm	012013	012014
1028mm x 914mm	012015	012016

SIlmIINE 4 RADIUS CORNERS



Size (h x w)	Frame	
	Black	White
22mm ClAmp RING		
565mm x 762mm		011942
565mm x 914mm	011943	
565mm x 1175mm	011945	011946
565mm x 1524mm	011947	
737mm x 914mm	011949	011950
1028mm x 914mm	011951	011952
27mm ClAmp RING		
380mm x 457mm	011953	011954
380mm x 914mm	011955	011956
380mm x 1175mm	011957	011958
380mm x 1524mm	011959	
450mm x 610mm	011961	011962
450mm x 762mm	011963	011964
450mm x 914mm	011965	011966
450mm x 1175mm	011967	011968
565mm x 610mm	011971	011972
565mm x 762mm	011973	011974
565mm x 914mm	011975	011976
565mm x 1175mm	011977	011978
565mm x 1524mm	011979	
737mm x 914mm	011981	011982
1028mm x 914mm	011983	011984

CAMEC[®] SILMIINE 4 RADIUS CORNERS SIIDING WINDOWS

Black or white powder coated frame. Tinted toughened safety glass. Clamp rings included.



NOTE: Fixed panel of the sliding window is **always** at the front of the vehicle. Contact your nearest Camec branch for detailed instructions on installation of sliding windows.

BLACK FRAMe

26mm CIAMP RING

Size (h x w)	RH	IH
260mm x 550mm	034634	034668
280mm x 457mm	038113	038117
280mm x 762mm	034636	034670
280mm x 1175mm	034641	034675
380mm x 1175mm	038534	
400mm x 850mm	034646	034680
450mm x 762mm	034648	034682
450mm x 1175mm	038514	038515
475mm x 690mm	034651	034685
500mm x 1500mm	034653	034687
508mm x 914mm	038570	038571
508mm x 1175mm	038572	038573
565mm x 762mm	034655	034689
565mm x 914mm	035121	035123
565mm x 1175mm	034660	034694
600mm x 800mm	036646	036647
675mm x 850mm		034699
675mm x 975mm	034664	034698
700mm x 850mm	034665	
700mm x 1050mm	036648	036649
720mm x 1650mm	034666	034700
737mm x 914mm	038502	038503
770mm x 1100mm	035057	034701
770mm x 1500mm	035058	034702
903mm x 914mm	038557	038559

33mm CIAMP RING

Size (h x w)	RH	IH
280mm x 762mm	035941	035940
280mm x 1175mm	036682	036683
475mm x 690mm	035900	035904
565mm x 914mm	038564	038565
675mm x 975mm	035902	035906
737mm x 914mm	038511	038512
770mm x 1500mm	035903	035907

WHITE FRAMe

26mm CIAMP RING

Size (h x w)	RH	IH
280mm x 457mm	038115	038119
280mm x 762mm	034638	034672
280mm x 1175mm	034643	034677
300mm x 600mm	038164	038165
380mm x 762mm	038345	
450mm x 762mm	034650	034684
450mm x 1175mm	036650	038929
508mm x 914mm	038355	
508mm x 1175mm	038453	
565mm x 762mm	038328	038329
565mm x 914mm	035122	035124
565mm x 1175mm	034663	034697
675mm x 975mm	038551	038552
720mm x 1650mm	038549	038550
737mm x 914mm	038491	
903mm x 914mm	038558	038560

33mm CIAMP RING

Size (h x w)	RH	IH
280mm x 762mm	036644	036645
508mm x 914mm	038492	038495
565mm x 914mm	038493	038496
565mm x 1175mm	038494	038497
737mm x 914mm		038500

REPLACEMENT INSECT SCREENS

Insect screens for Camec wind-out windows are removable, fully flexible and can be washed as required. They are high frequency welded and are an integral part of the window.

Replacement insect screens to suit the following sizes. Measurements reflect the size of the window opening in the vehicle and not the actual insect screen size. Note: Top screen of all double hopper windows have square bottom corners and all single hopper and the lower screens of double hopper windows have round bottom corners.

Round Bottom Corners

280mm x 457mm	010229
280mm x 610mm	010233
280mm x 762mm	010235
280mm x 914mm	010237
280mm x 1175mm	010239
280mm x 1524mm	010241
380mm x 457mm	010231
380mm x 610mm	010243
380mm x 762mm	010245
380mm x 914mm	010247
380mm x 1175mm	010249
380mm x 1524mm	010251
450mm x 610mm	010253
450mm x 762mm	010255
450mm x 914mm	010257
450mm x 1175mm	010259
450mm x 1524mm	010261
508mm x 457mm	010265

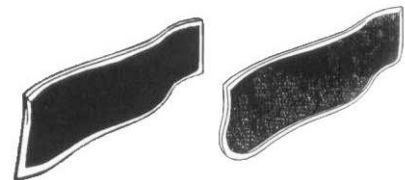
CAMEC[®]

PROTECTOR SHADES 2 RADIUS CORNERS



Suits all glass and Jupiter windows. Features a formed acrylic white panel with black or white powder coated frame and specially designed stays with inbuilt limit stops which allow full and easy adjustment to any angle plus a full length waterproof hinge for ease of installation to Camec windows.

Size (h x w)	Black	White
290mm x 508mm	038460	035914
290mm x 1226mm		035915
290mm x 1575mm		035916
390mm x 508mm		035917
390mm x 965mm	038475	035918
390mm x 1226mm	035919	035921
390mm x 1575mm	035922	035923
460mm x 661mm	035924	035926
460mm x 1226mm	035927	035930
460mm x 1575mm	035931	035932
518mm x 508mm	039168	035953
518mm x 1226mm	035934	035935
518mm x 1575mm	035936	035937
518mm x 1715mm		038386
575mm x 1226mm	038304	035938
575mm x 1575mm		035939



Round Bottom Corners

508mm x 762mm	010267
508mm x 914mm	010269
508mm x 1175mm	010271
508mm x 1524mm	010273
512mm x 762mm	010263
565mm x 457mm	010275
565mm x 610mm	010277
565mm x 762mm	010279
565mm x 914mm	010281
565mm x 1175mm	010283
565mm x 1524mm	010285
635mm x 1630mm	010287

Square Bottom Corners

280mm x 457mm	010288
280mm x 762mm	010290
280mm x 914mm	010292
280mm x 1175mm	010294
280mm x 1524mm	010296
450mm x 762mm	010298
512mm x 762mm	010299
565mm x 762mm	010301
565mm x 914mm	010303
565mm x 1175mm	010305

FIYSCREEN TURNBUTTON

A simple locking device for hinged lycscreens.
5/16" black.



008258



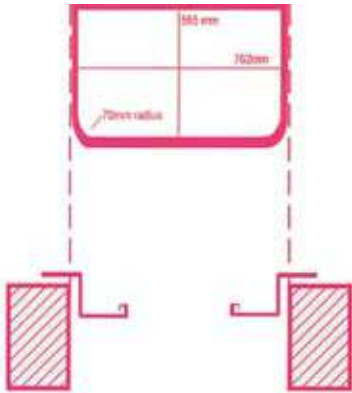
CAMEC WINDOWS INSTAIIATION NOTES

Window Sizes

These are opening sizes required, height x width

Example:

To prepare opening for window 565mm x 762mm



565mm x 762mm
CLEAR OPENING

Measuring and Fitting Instructions

Camec windows are precision components manufactured to close tolerances and it is essential that the following points are observed to ensure optimum fit and operation.

1. Check the prepared opening is square and has been cut to the nominated size.
2. Fit the window into place using normal fixing and sealing methods, taking care not to damage the plastic seal around the window blade.

Window must not be opened during fixing operation as packing blocks between the blade and frame ensure the frame remains square.

3. Unlock the window blades - lock handles to the left.
4. Insert handle fully into control box (left or right as required). A press plug is provided to blank off unused handle hole in control box.
5. Wind clockwise until blade is open. Direct pressure on the blade may be necessary to release the blade from the packing blocks.
6. Remove packing blocks from the window frame and discard.
7. Close window checking blade alignment with window almost closed. It may be necessary to adjust as detailed below, particularly if the window frame is mounted on other than a lat plane.

Adjustment of Blade Alignment

Sash and Frame:

Disengage cross shaft by pushing shaft into RH box against the spring to release left end from the LH box. Turn handle to align blade parallel to frame. Measure with window almost closed. Replace rod and check.

Double Hopper:

2 handles, individual control - adjust each blade as for sash and frame.

2 RADIUS CORNERS WINDOW SpARES

